

Cisco Network Assessment Using neteXpose DNA

neteXpose DNA has been added to the list of appropriate and reliable Network Assessment Tools for Cisco's Installed Base Lifecycle Management (IBLM) Practice, and now provides the Cisco Discovery Services (CDS) API.

Vendor-independent Discovery

NeteXpose DNA is a network discovery and inventory solution. It offers asset, configuration, topology, and vendor-specific information on Cisco IP network devices and end-stations as well as on other manufacturers' devices. The data is delivered pre-formatted into Inventory Reports, Value-added Information (VAI) Reports, and Network Maps.

Inventory Reports

NeteXpose DNA offers a variety of inventory reports, listing all assets gathered during a discovery phase by type, model and vendors. Intuitive summary graphs display the device totals per vendor, type, and model.

Two Product Lifecycle Approaches

The most recent product lifecycle data and security information is provided on the **neteXpose Knowledge Server** as well as on the DNA PC as part of the DNA software. After the discovery, the discovery data is automatically correlated with the EoX data. The EoX Reports created by the **DNA VAI Application** are not exclusive to Cisco devices and report on other selected network manufacturers. The customer can get access to reports and maps on his own DNA PC or receive a printed documentation from his neteXpose partner. DNA supports Microsoft Office Excel Reports and Microsoft Office Word templates. The partner can also use his own national language templates including company design together with the DNA software. Using the **Cisco CDS API** the Cisco-related parts of the discovery results are transferred to Cisco where the EoX information is added, and the Cisco lifecycle analysis data services reports and other services reports are produced.

DNA EoX Maps

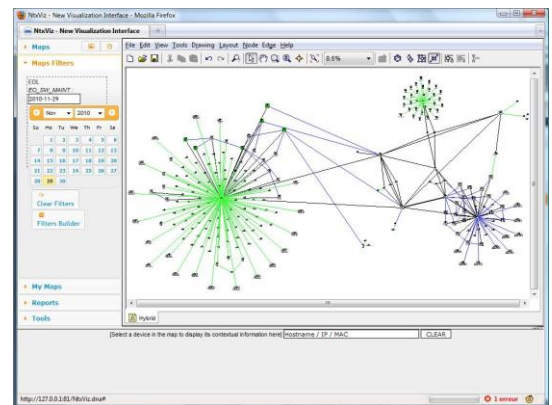
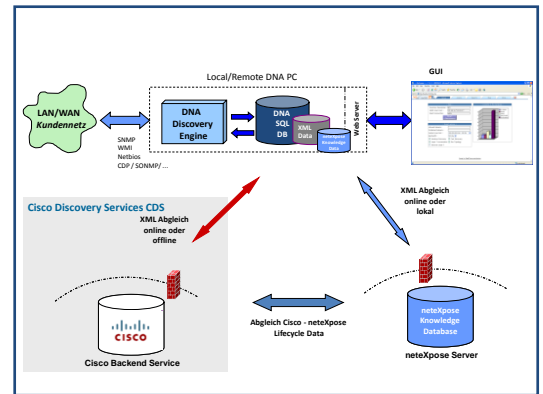
Special DNA EoX Maps can be automatically produced using EoX filters. The maps will display the "end of X" status of any network device – today and on any selected future date.

DNA Formats

DNA supports the following formats: Microsoft Office Excel, Microsoft Office Word, Microsoft Office Visio, JPEG and DNA. All DNA Reports and Maps are accessible via a web interface.

Benefits

- Open discovery and inventory approach
- Fully compatible with Cisco IBLM and CDS process
- All Cisco-specific asset and product lifecycle information and reports
- Asset and EoX information on other selected network device manufacturers
- End-station discovery locates PCs, servers, printers, VOIP phones
- Highly adaptable to partners' and customers' needs
- Data security and privacy ensured
- Focus on support and services tasks



Contact

neteXpose SARRL
400 avenue Roumanille – BP 300
F-06906 Sophia Antipolis cedex
FRANCE


Phone: +33 4 93 00 12 74
Email: info@netexpose.com
Web: <http://www.netexpose.com>

Cisco IBLM ASSESSMENT APPROACHES COMPARISON		
	neteXpose Knowledge Server	Cisco Discovery Services (CDS)
GENERAL INFO		
Positioning	All interested neteXpose Partners and Customers	Registered Cisco Partners only
DISCOVERY		
DNA Discovery Results	Vendor-independent discovery (using SNMP, SSH, WMI, and vendor-specific methods and protocols) locating: <ul style="list-style-type: none"> • Network devices (Cisco and other network vendors) • End-stations (e.g. PCs, servers, printers, VOIP phones) 	
DNA Discovery Data Storage	Central server (e.g. at the partner's service center), DNA station, DNA USB stick	
PRODUCT LIFECYCLE DATA		
EoX Data Storage	Knowledge Database (neteXpose server)	Cisco CDS Backend System
EoX Data Types	EoX and Common Vulnerability and Exposures (CVE) data on Cisco devices (dates for End of Sales, End of Software Maintenance, Last Day Support, CVE) EoX data on selected other network vendors' devices (e.g. Avaya, HP, Nortel)	CDS supported Cisco components and information (Cisco lifecycle analysis data services and other services)
EoX Data Creation	After the discovery at the customer site or at partner's service center Procedure: <ul style="list-style-type: none"> • EoX data available on the DNA PC; online update with neteXpose knowledge server • Correlation of discovery data with EoX data on the DNA PC at the customer's site (local) or offline (partner's service center) 	Later by Cisco/Partner: Procedure: <ul style="list-style-type: none"> • DNA Cisco CDS API / Cisco Partner Login • Transfer of the customer discovery data (Cisco components only) according to Cisco CDS • EoX/CDS evaluation done by Cisco
Results Provisioning	Online reports on DNA Customer PC, customer intranet, and/or printed documentation (MS Excel, MS Word) neteXpose documentation templates and/or partner-specific templates and design as well as national language documentation supported	Printed Cisco Reports (MS Excel)
EOX REPORTS		
Information	Vendor-independent: <ul style="list-style-type: none"> • End of Sales • End of Software Maintenance • Last Day Support • CVE • Related EoL Announcement or Product Announcement • Link to manufacturer's web • Links to public and private security organisations 	Cisco lifecycle analysis data services and other services: <ul style="list-style-type: none"> • Cisco Customer Data via Customer Registry SOA Service • All CDS info • Hardware EOX • Software EOX • PSIRTs • Field Notices (FN) • Know The Network (KTN) • CDS Report • More in next CDS Release v1.4
Types	DNA Report Types per Network Device Manufacturer <ul style="list-style-type: none"> • Chassis • Chassis and components • Hardware types • Models • Components • IOS/OS versions 	DNA CDS Report Type: <ul style="list-style-type: none"> • IBLM Reports (Details & Summary) • Hardware EOX Reports (Details, Summary, Product Family) • Software EOX Reports (Details, Summary Versions, Summary Train & Version, Summary Train & HW) • PSIRTs Reports (Details & Summary) • Field Notices (FN) Reports (Details & Summary) • Know The Network (KTN) Reports (Details & Summary) • More in next CDS Release v1.4
EOX VISUALISATION		
Diagrams	Types, vendors, models (%)	
Maps	Automatically created DNA EoX Maps based on the following filters: <ul style="list-style-type: none"> • Which components are today, and at any future date EoS, EoSWM, LDS? • Which EoX devices are located in critical segments? • Other customer-specific filters supported 	
Software and License	Email to sales@netexpose.com	Cisco IBLM/CDS Login on neteXpose home page


Cisco Information Using the netEXpose Server Approach

The DNA software produces Cisco Asset Reports, Cisco EOX and Security CVE Reports, offering the following information

Cisco Hardware	<p>Chassis: Name, IP address, type, model, manufacturer, description, chassis type, chassis software, chassis firmware, chassis serial number, number of slots, mask and subnet address</p> <p>Cards & Modules: Card and slot number, type, description, serial number</p> <p>Connectivity & Topology Information: Status, port, link type, speed, SNMP, CDP, IP/MAC address, connected devices type</p>
Cisco Software	<p>IOS: IOS train, IOS version, number per version, related Cisco hardware (model, type)</p> <p>Other OS: Version, number, related hardware</p>
Lifecycle Information	<p>EOX Dates: End of Sales, End of Software Maintenance, Last Day Support per IOS train and version, including related Cisco hardware (chassis, module, card)</p> <p>Others: Colored warning levels and status flags Cisco IBLM-recommended replacement products (if supported by the partner) Link to Product Announcement or EOX Announcement on Cisco web site</p>
Security (CVE) Information	<p>Report Information: Common Vulnerability and Exposures (CVEs) per IOS train and version</p> <p>Additional Online Information: Link to CVE sources, e.g. Cisco web site, National Vulnerability Database (NVD), as well as other public and private security portals providing the latest data CVE Identifier (ID), including ID number and NVD date Brief CVE description and NVD vulnerability severity rating</p>

CISCO IOS EOL Detailed Summary 

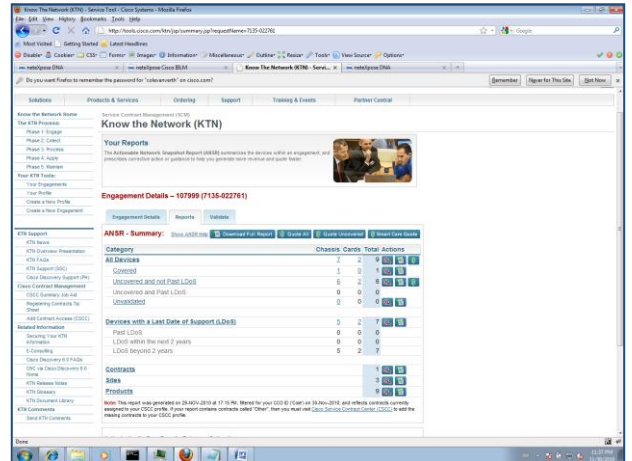
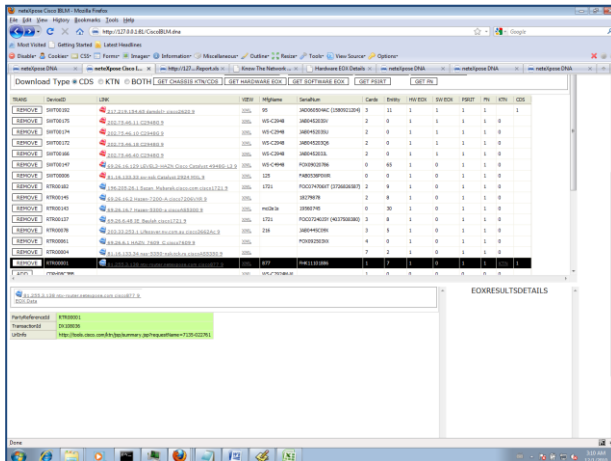
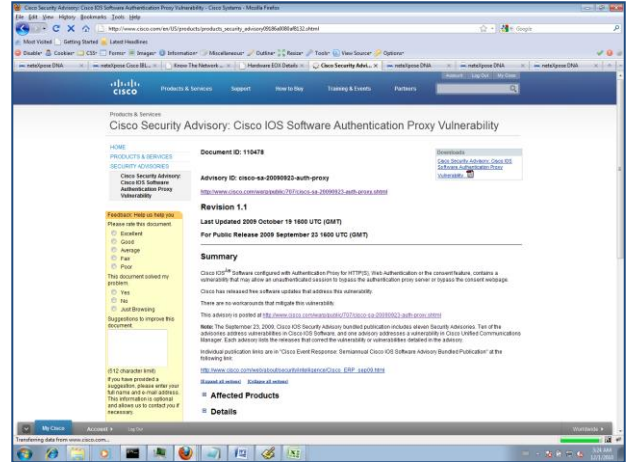
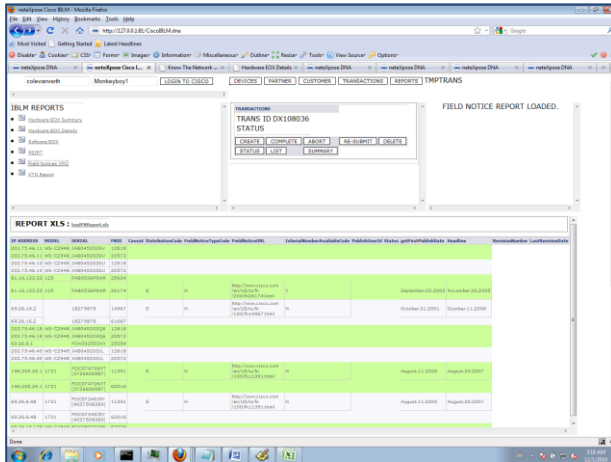
IOS TRAIN	IOS	MODEL	TOTAL	URL	EOL_ANNOUNCMT	EO_SALES	EO_SW_MAINT	LAST_DAY_SUPPORT
(12.1)	12.1(22)EA2, RELEASE SOFTWARE (fc1)	Catalyst 2950 24	4	LINK	December 12, 2003	June 12, 2004	February 12, 2005	June 12, 2009
(12.1)	12.1(22)EA2, RELEASE SOFTWARE (fc1)	Catalyst 2950SX-24	2	LINK	December 12, 2003	June 12, 2004	February 12, 2005	June 12, 2009
(12.2)	12.2(20)EX, RELEASE SOFTWARE (fc1)	WS C3560-24TS	2	LINK	September 19, 2005	March 19, 2006	March 19, 2007	March 19, 2011
(12.2)	12.2(25)EWA14, RELEASE SOFTWARE (fc1)	Catalyst 4503	2	LINK	September 19, 2005	March 19, 2006	March 19, 2007	March 19, 2011
(12.2)	12.2(35)SE5, RELEASE SOFTWARE (fc1)	WS C3560-24TS	1	LINK	September 19, 2005	March 19, 2006	March 19, 2007	March 19, 2011
(12.2)	12.2(53)SE, RELEASE SOFTWARE (fc2)	WS-C3560-48TS	7	LINK	September 19, 2005	March 19, 2006	March 19, 2007	March 19, 2011
(12.2)	12.2(53)SE, RELEASE SOFTWARE (fc2)	WS C3560-24TS	11	LINK	September 19, 2005	March 19, 2006	March 19, 2007	March 19, 2011
(12.3)	12.3(8)JEC2, RELEASE SOFTWARE (fc1)	AIRAP 1210	10	LINK	September 15, 2006	March 15, 2007	March 15, 2008	March 15, 2012

CISCO EOL by Hardware Type 

OID	Hardware_Type	COUNT	URL	EOL_ANNOUNCMT	EO_SALES	EO_SW_MAINT	LAST_DAY_SUPPORT
SNMP	WS-C3560-24TS-S	14	LINK	January 4, 2010	July 5, 2010	July 5, 2011	July 31, 2015
SNMP	WS-C3560-48TS-S	7	LINK	January 4, 2010	July 5, 2010	July 5, 2011	July 31, 2015
SNMP	WS-C2950-24	4	LINK	October 22, 2007	October 21, 2008	October 21, 2009	October 20, 2013
SNMP	WS-C2950SX-24	2	LINK	October 22, 2007	October 21, 2008	October 21, 2009	October 20, 2013
SNMP	WS-C4503	2	LINK	January 30, 2010	July 31, 2010	July 31, 2011	July 31, 2015
SNMP	AIR-AP1231G-E-K9	10	LINK	December 19, 2008	June 19, 2009	June 19, 2011	June 18, 2014
CDP	C801	1	LINK	January 15, 2007	July 16, 2007	October 14, 2007	July 14, 2012

Cisco Information Using the CDS API

Using the Cisco CDS API, the DNA software produces all CDS-related reports, such as Cisco Hardware EOX, Cisco Software EOX, Field Notices, PSIRT info, KTN report and KTN link.



Additional DNA Information

On other vendors and vendors' devices, DNA provides the following information.

Asset Reports

Report Types (based on SQL database):
 Overview Reports: List All, All Types, All Models, All Vendors, All Subnets, All Hardware, All Software, All Services, All Processes
 Vendor Reports: Cisco Assets, Cisco CDP, Cisco HSRP, Nortel DP, Avaya Assets, etc.
 Type Reports: Routers, Switches, Microsoft Software, NetBIOS Software, Novel Software, etc.
 Device Report: Name, IP/MAC address, type, manufacturer, serial number, slot/port/connectivity data, EoX data, access to DNA Network Maps
 SQL Query Reports: customisable content

Lifecycle Information

EOL/EOS data dependent on the DNA data base input and the manufacturer's information

The DNA Visualisation Application is available in two versions:

Basic Visualisation

Layer 2 Local Map:
 Shows the immediate layer 2 environment for a selected device, e.g. switch, connected end stations, other switches, including connectivity data and basic asset information
Layer 3 Local Map:
 Shows the selected layer 3 device, it's subnet and next hop routers for the subnet

DNA Network Topology Visualisation v2.0

Pre-defined DNA Maps on different network layers:

Automatically created per mouse click; displaying network devices and end-stations including asset information

Customised DNA Maps

Automatically created based on user-selected DNA discovery database content w/w customised icons

EoX Maps:

Automatically created based on EoX filters, e.g.:

Show me all devices which are EoX today or at any future date

Show me all EoX devices in critical environments, etc.

Full-featured sophisticated Layout and Graph Application

Zooming, panning and scrolling features support drill-down from high level views to lower levels, including every single device and connection

Overview Window displays the complete drawing, when zooming, scrolling, or panning modifies the view port of the drawing canvas

Icon palette; different label and line styles

NTX Switch	IP Interfaces	Connections	EOL
1.3.6.1.4.1.45.3.49.1	LINK		

Installation and Processes

NeteXpose DNA can be installed on any server, PC or Laptop. Asset data collection and analysis as well as end of life data correlation is performed on the customer's site. For security and confidentiality no access to third party systems is necessary when applying the neteXpose server approach. In this case report data is only available to the person who originated the discovery process and has access to the DNA software. By selecting the appropriate setup, this person can also determine which data the discovery process should produce, which network areas and/or addresses should be discovered, and which should be excluded.

System Requirements

DNA PC

Microsoft Windows 7, XP or 2003 Server: Pentium 4, 2 GB RAM
Linux Suse Enterprise; Red Hat ES3: Pentium 4, 2 GB RAM
Unix/Solaris requirements on request

About

neteXpose develops and sells advanced software solutions to automatically discover and diagnose IP infrastructure data, and to present them in reports and network maps. The company's Documentation Network Application (DNA) allows professional service organisations, network solution and service providers, enterprises and organisations to automate network audits and service processes as well as to fill existing CMDBs with IP infrastructure data.