

Service Information

Network Audit Services

DNA (Documentation Network Application) Audits provide enterprises with a detailed insight into their deployed IT infrastructure. They deliver the essential information required for network planning, network operations and network security as well as for business applications, e.g. inventory, cost determination and contract negotiations.

DNA automates the discovery process, data collection, data analysis and documentation tasks, making network audits efficient and affordable. Enterprises thus obtain a consistent, up to date inventory, which serves as base for technical and business decisions.

Services Overview

Network Discovery Automation

DNA automatically discovers IP devices (switches, routers) and end-stations (PCs, servers, printers, VoIP phones). Device, configuration and topology data are stored in an open SQL database for additional analysis.

Inventory Automation

DNA evaluates the scanned data from different asset management aspects, e.g. number of devices and end-stations, deployed device types and vendors, hardware, software, connectivity data, device location (see service examples). Predefined reports facilitate data analysis; SQL queries allow for customised reports.

Visualisation Automation

DNA automatically calculates network topology and generates two network maps. The Layer 2 Neighbourhood Map shows the immediate layer 2 environment of a selected device, e.g. switch, connected PCs and other switches. The Layer 3 Next Hop Map displays a selected router, its subnets and next hop router. Device and connectivity map data are automatically updated after every new discovery. DNA maps can be exported to common visualisation applications to draw large, multi-layered network maps.

Service Processes

netexpose partners offer their customers a complete service portfolio:

- Information gathering: service scope definition, preliminary actions, provision of technical information by customer
- Discovery stage: discovery setup, discovery execution, component integration, data exchange with 3rd party applications
- Analysis stage: asset reports, asset analysis, network operations optimisation, security risk evaluation, maps
- Information Distribution: web interface, documentation, CD.

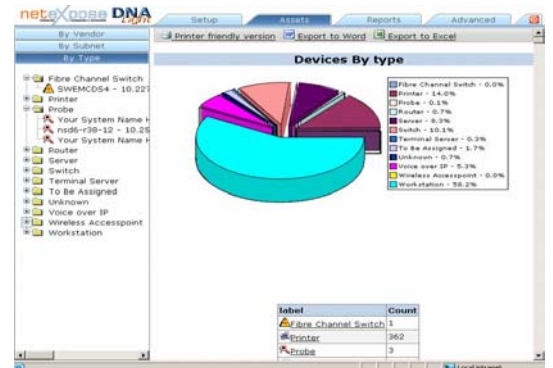


Figure 1: Devices, sorted by Type

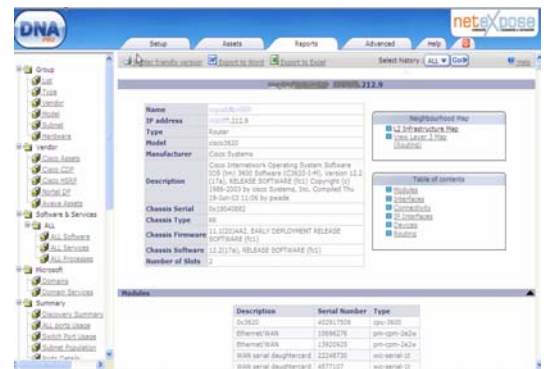


Figure 2: Asset Report – Router

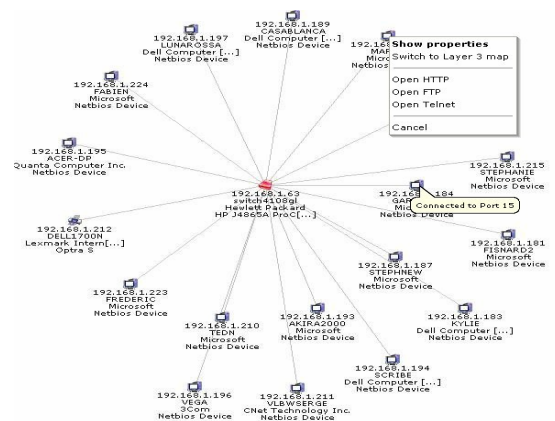


Figure 3: Layer 2 Neighbourhood Map

Documentation Network Application



Service Models

neteXpose partners deliver customised services:

- Single Audit Service: single inventory, including discovery, reports, maps and other analysis tasks
- Continuous Audit Services: inventory, change tracking, history storage, including reports, maps and other analysis tasks for an agreed contract time
- Inventory scans can be performed at the customer's site or remotely via the Internet.

Licence Models

DNA applications are the perfect choice for end-customers as well as professional and managed service organisations, network solution and service providers and network consultants. neteXpose offers the appropriate license type for every usage situation.

Limited Licence

A licence for a limited number of devices and/or limited duration, linked to the PC on which the DNA software runs

Unlimited Licence

A licence for a unlimited number of devices and unlimited duration, linked to the PC on which the DNA software runs

OEM Licence

DNA runs as part of an ITIL Configuration Management Database (CMDB), e.g. integrated into a Life-cycle Management, Facility Management, Network Management Application.

Benefits

- DNA products and services are simple, flexible and efficient
- Easy software installation and usage without the need for costly training
- Supports common visualisation tools, report applications and formats
- A modular approach and flexible licence model ensure cost-efficient deployment for every customer environment
- Data exchange with 3rd party applications adds value to existing customer installations
- Flexible licence models, based on different device numbers and key duration, make software purchase, and even single audit services affordable
- Improved network planning, network operation and network security
- Translates network data into reliable business information, e.g. calculating purchasing, maintenance and staff costs for the installed hardware and software, amortisation and depreciation expense definition, supplier contracts and software license agreements, network cost charging, IT budgeting.

Contact

Phone: +33 4 93 00 12 74
E-Mail: info@netexpose.com
<http://www.netexpose.com>

neteXpose SARM
400 avenue Roumanille – BP 300
F-06906 Sophia Antipolis cedex - FRANCE



DNA Service Examples

Network Documentation

Automatically discovers network devices and end-stations, including software, hardware, connectivity data, device names, serial numbers, reports, maps, etc.

Network Planning

Delivers accurate data on deployed hardware and software, device types, vendors, device numbers, age, used or free ports and slots, device location, bandwidth usage, bottlenecks.

Network Operation & Security

Identifies anomalies and security risks, e.g. duplicated and virtual addresses, unresolved IP addresses, unresolved ports, unmanaged, unknown, hidden devices, unauthorised users, unlicensed or prohibited software. Delivers statistics on switch port population, number of trunk ports, host ports, traffic and errors per port, etc.

Business Operation

Accurate data on device numbers, types, vendors, locations, usage.

Benefits

Enhanced troubleshooting, less security risks, cost reduction by automating manual tasks, data accuracy and consistency, accurate IT budgeting.