

DNA Network Inventory Service – Keeping You Informed

Many IT and business decisions require precise and up to date infrastructure data. With our DNA Network Inventory Service you know every network hardware and software device – anytime, everywhere in your organisation, in detail: types, numbers, vendors, connections, hardware and software configurations.

Two DNA Service Modules – Tailor-made For Your Organisation

Not enough time and staff to perform an IT inventory? – No problem. neteXpose consultants or partners do the first scan at your site, including data analysis, report and map generation, data presentation and training. Scan results and DNA software are supplied on a PC or on the intranet, to view reports and maps and to track inventory changes. Two service modules are available:

Module 1:

1. IP inventory Service, including
 - automated IP network device, IP end station, and application discovery
 - database filling
 - automated report generation
 - basic visualisation, including two network map types (switch and router neighborhood)
2. Data analysis, data presentation and customer training
3. Access to inventory data, reports and maps (customer PC and/or intranet), including DNA software for one year or longer to track inventory changes
4. Remote support

Module 2:

1. IP Inventory Service similar to module 1, PLUS
2. Network topology calculation, and complete layer 2 and layer 3 network topology visualisation, including seven network map types
3. Data analysis, data presentation and customer training
4. Access to inventory data, reports and maps (PC and/or intranet), including DNA software and visualisation software for one year or longer to track inventory changes and create maps
5. Remote support

Advantages

- No investment budget needed, less risk, short ROI
- Vendor-independent hardware and software inventory, including IP network devices, end stations, system software and applications, network topology
- Time and cost-effective through automated inventory, data analysis and presentation
- Up-to-date network asset data for network planning, network operation, network security planning, IT budgeting, stocking, outsourcing and vendor contract negotiations

Service Modules in Detail

The two offered service modules include the following services and products, provided by neteXpose consultants or partners:

Module 1: IP Inventory and Basic Topology Visualisation

1. First network scan to inventory IP network devices (e.g. routers, switches, access points) and end stations (e.g. servers, PCs, network printers, VoIP phones) from different vendors, data base filling, and report generation.
2. The following IP network device reports are provided:
 - Group Reports: all devices found, device types, vendors, models, subnets, hardware, software
 - Vendor Reports: Cisco assets, Cisco CDP, Nortel DP, etc.
 - SNMP details: name, IP address, type, model, manufacturer, connectivity, OS version, firmware version
 - Summary Report: discovery results, port usages (all ports, switch ports), port details, subnet population

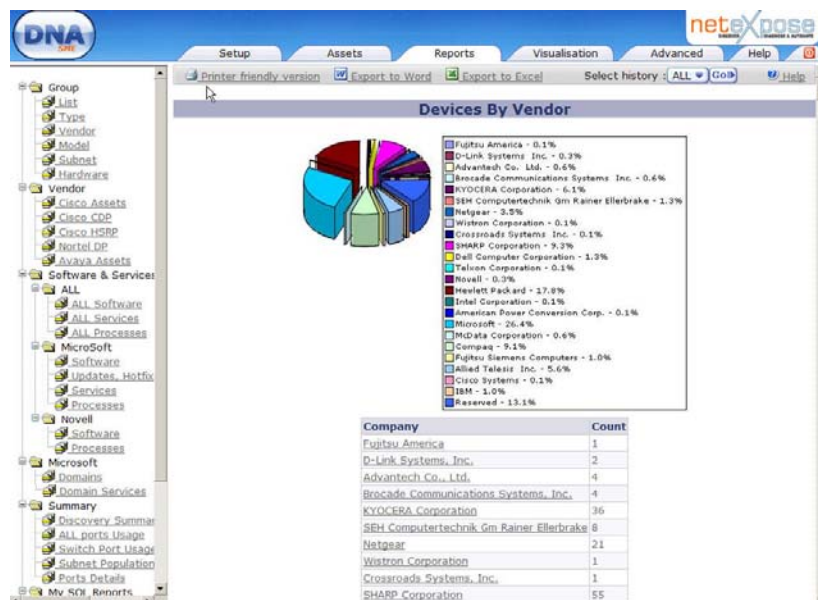


Photo 1: Vendor Report (section)

Documentation

Network Application

The following end station reports and data are provided:

- Software and services: all software, all services, all processes.
- Microsoft Reports: software, updates, hotfixes, services, processes, domain, domain services.
- Novell Reports: software, processes.
- End station details: depended on the end station configuration and the access rights of the DNA station, the scan delivers either WMI (Windows Management Instrumentation) information, SNMP or NetBIOS data.
 - NetBIOS end station: end station hardware data (name, IP address, type, model, manufacturer), NetBIOS data (e.g. workstation service, server service, file server service, messenger service, domain name, browser services, master browser)
 - SNMP end station: name, IP address, type, model, manufacturer, connectivity, storage, installed software, updates, hot fixes, service packs
 - WMI end station: name, IP address, type, model, manufacturer, description, BIOS name, BIOS serial, BIOS manufacturer, BIOS version, OS name, OS model, OS manufacturer, contact, owner, user name, memory, connectivity, IP interfaces, NetBIOS data, processors, disks, storage, printers, monitors, installed software, updates, hot fixes, service packs
- IP printer details: name, IP address, type, model, manufacturer, toner, connectivity, IP interfaces, NetBIOS data
- VoIP details: name, IP address, type, model, manufacturer, OS version, serial number, chassis information (vendor-dependent)

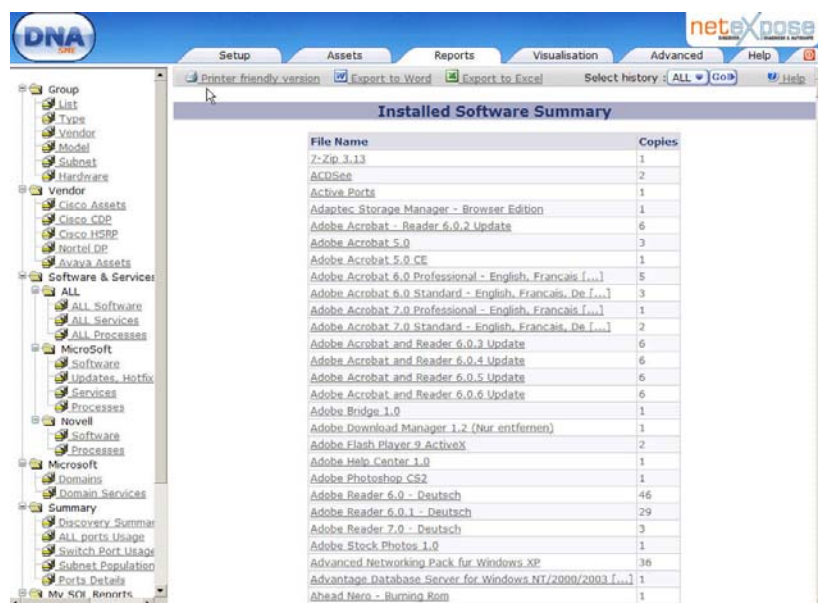


Photo 2: Software Summary Report (section)

Documentation Network Application

5. Basic Network Views:

- Layer 2 Neighborhood Map: shows selected switch, including connected end stations and other switches
- Layer 3 Next-hop Map: shows selected router or layer 3 switch, including subnets and next hop routers.

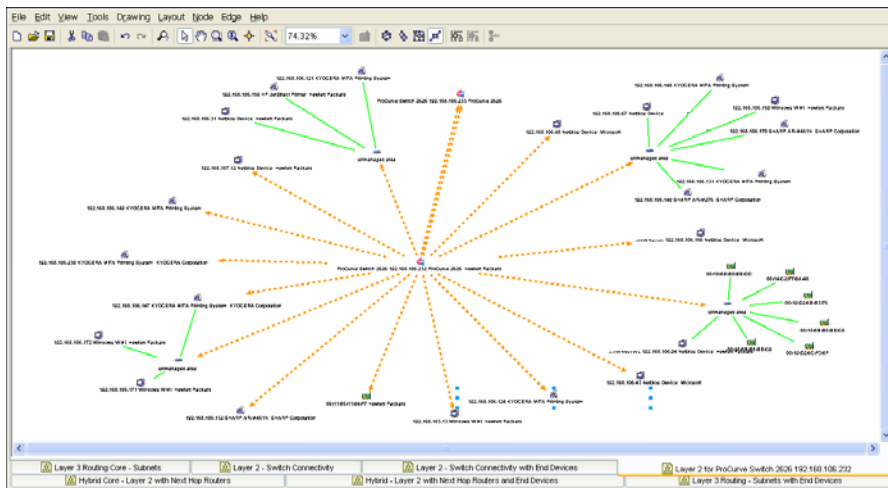


Photo 3: Layer 2 Neighborhood Map: selected switch, connected end stations (yellow), connected switches with own end stations (yellow, green), redundant switches (twice yellow)

6. Customer training, course material, exercises
7. Inventory data supply, including reports and maps, on a customer PC and/or intranet
8. DNA software license for one year for inventory change tracking
9. Remote support

Module 2: IP Inventory, Network Topology Calculation and Visualisation

All services and products of module 1, plus:

1. Network topology information:
 - Layer 2, layer 3, layer 2/3 network topology information
 - Information details: connection type, data rate, spanning tree, host/trunk connection, subnets, end points per connection
2. Seven automatically generated network map types:
 - Hybrid Core: Layer 2, including next hop routers
 - Hybrid: Layer 2, including next hop routers and end stations
 - Layer 2 Core: Next hop routers
 - Layer 3 Routing Core: subnets
 - Layer 3 Routing: subnets and end stations
 - Layer 2: switch network
 - Layer 2: switch network, including end stations

Documentation Network Application



3. Variety of layout styles, drawing options and tools (e.g. zooming, overview windows, icon palette, different line styles, device and connection labeling), export facility to Microsoft Visio
4. Customer training, course material, exercises
5. Inventory data supply, including reports and maps on a customer PC and/or intranet
6. DNA software license for inventory change tracking, and DNA Visualisation v1.0 license for map generation for one year
7. Remote support

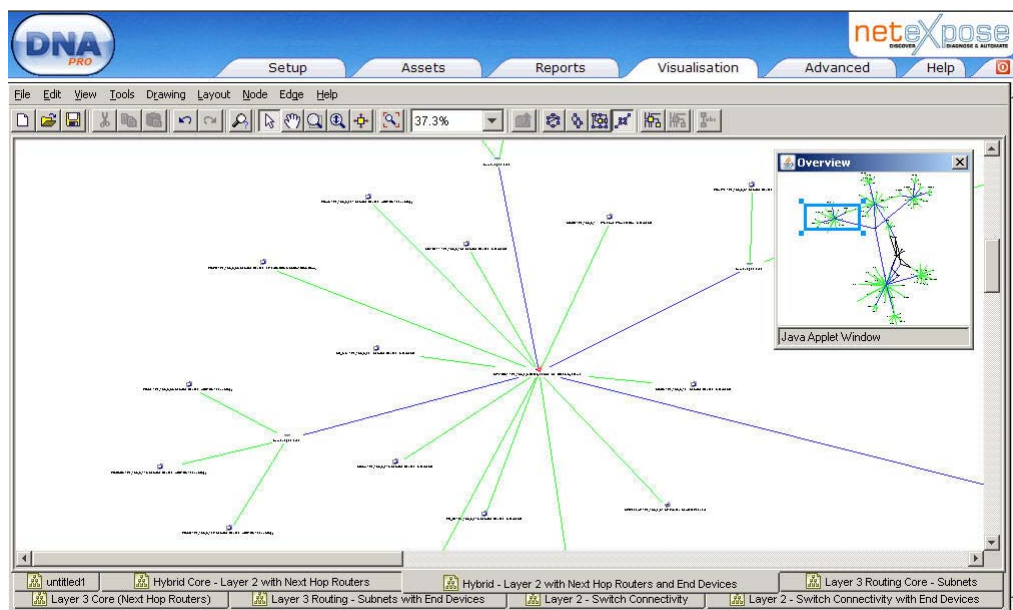


Photo 4: Hybrid Map: Layer 2, including next hop routers and end stations - general network view and zoomed network part (see overview window), zoomed network part - switch, connected end stations, end station connections (green), connected other switches, switch connections (blue)

Prices and Additional Services

Prices for both modules depend on the number of devices (network devices and end stations): up to 1000, up to 5000, up to 10.000, and 10.00plus devices. Additional services, e.g. report and map customisation, change tracking during the year, can be agreed on extra charge.

For more information, please contact: sales@netexpose.com

Contact

neteXpose S.A.R.L

Phone: +33 4 93 00 12 74

www.netexpose.com